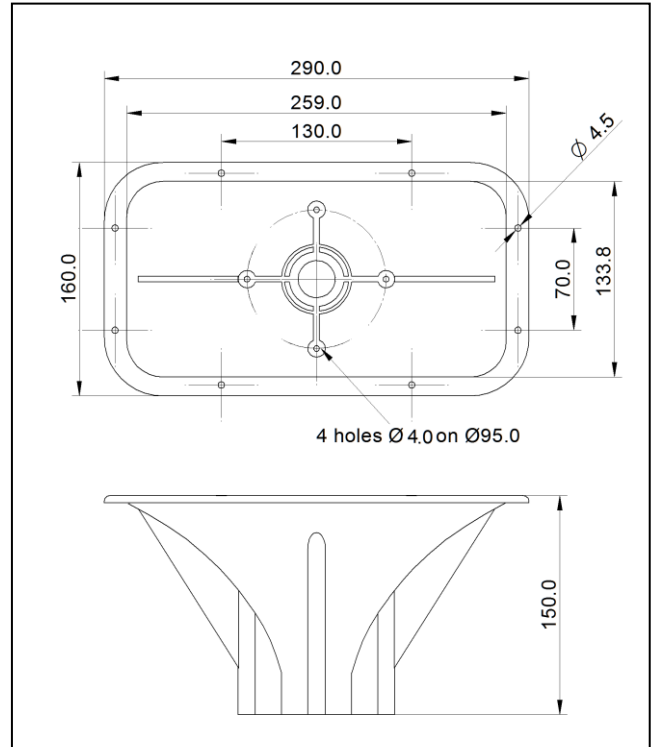
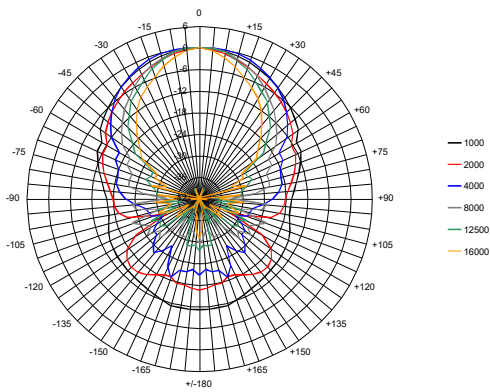


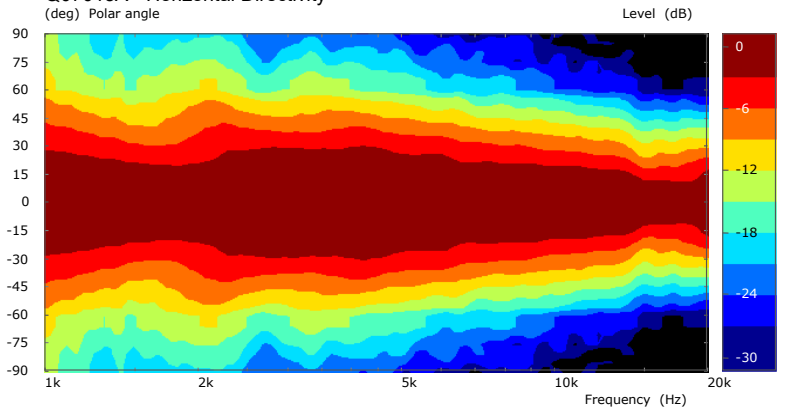
SPECIFICATIONS		
Throat Diameter	25.4	mm (1")
Cutoff Frequency	1.00	kHz
Net Weightl.....	0.41	Kg
Horizontal coverage	80°	
Vertical coverage	60°	
Material	Plastic	
Shape.....	Rectangular	
MOUNTING INFORMATION		
Overall Dimensions	290x160x150 mm	
Baffle Cutout Dimensions.....	255x135 mm	
Driver Mounting Holes.....	4 holes Ø4.0 mm	
Baffle Mounting Holes.....	8 holes Ø4.5 mm	
NOTE		
Use a 4.2 mm self-tapping screw for coupling with the driver		



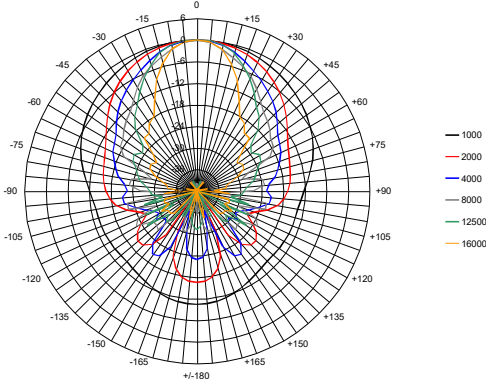
Q07015A Horizontal Polar Pattern



Q07015A - Horizontal Directivity



Q07015A Vertical Polar Pattern



Q07015A - Vertical Directivity

