

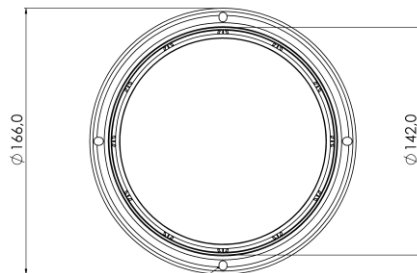
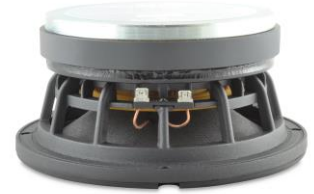
6 M 2 CP 4Ω

6" | 300 W

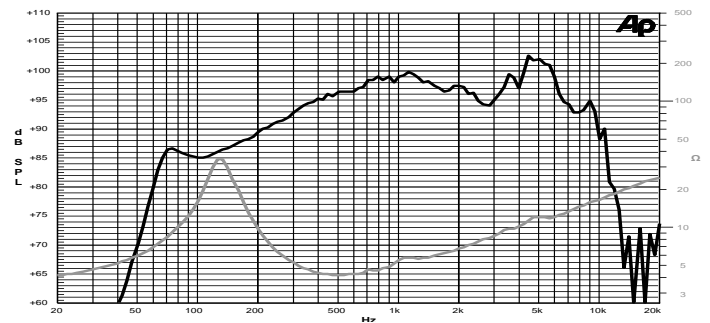
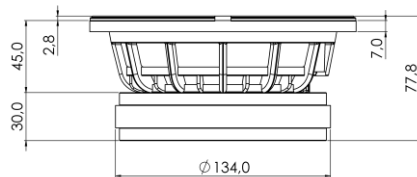
Code Z004079

Midrange

- 2" voice coil Kapton former and Aluminium Winding
- PS Spider with Progressive Waves
- Ferrite Magnet Circuit
- VVc Ventilated Voice Coil to reduce Power Compression
- 96.8 dB sensitivity
- Frequency Range 130-6000 Hz



4 holes 6x5  
on  $\varnothing$  155 mm



Frequency Response on 18 Lt @ 70 Hz Vented Box @ 1W, 1m  
Free Air Impedance

## General Specifications

Nominal Diameter	166 mm (6")	
Nominal Impedance	4 $\Omega$	
Rated Power AES <sup>(1)</sup>	150 W	
Continuous Program Power <sup>(2)</sup>	300 W	
Sensitivity @ 1W/1m <sup>(3)</sup>	96.8 dB	
Voice Coil Diameter	50 mm (2")	
Voice Coil Winding Depth	9 mm	
Magnetic Gap Depth	8 mm	
Flux Density	1.14 T	
Magnet Weight	810 g	
Net Weight	2.7 kg	

## Thiele & Small Parameters<sup>(4)</sup>

$R_e$	3.1 $\Omega$	$F_s$	135.0 Hz
$Q_{ms}$	4.05	$Q_{es}$	0.38
$Q_{ts}$	0.35	$M_{ms}$	10.8 g
$C_{ms}$	129 $\mu$ m/N	$B_{xl}$	8.62 Tm
$V_{as}$	3.5 l	$S_d$	138.9 cm <sup>2</sup>
$X_{max}^{(5)}$	+/-2.0 mm	$X_{var}^{(6)}$	+/-4.0 mm
$\eta_0$	2.21 %	$L_e$ (1kHz)	0.38 mH

## Constructive Characteristics

Magnet	Ferrite
Basket Material	Aluminium Die-Cast
Voice Coil Winding Material	Aluminium
Voice Coil Former Material	Kapton
Cone Material	Paper
Cone Treatment	No
Surround Material	Treated Cloth
Dust Dome Material	Solid Paper

## Mounting Information

Overall Diameter	166 mm
Baffle Cutout Diameter	143 mm
Mounting Holes	4 holes 6x5 on $\varnothing$ 155 mm
Total Depth	77.8 mm

(1) Rated Power measured with 2-hour test with pink noise signal, 6dB crest factor, loudspeaker in free air, power calculated on rated  $Z_{min}$ . (2) Power on Continuous Program is defined as 3dB greater than the Rated Power. (3) Calculated by Thiele & Small parameters, for SPL average in box refer to frequency response. (4) Thiele & Small parameters measured with laser system after preconditioning test. (5) Measured with respect to a THD of 10%. (6) Value corresponding to a decay of the Force Factor, or Compliance, or both, equal to the 50% of the small signal value. (7) Drawing dimensions: mm.